

Home Construction Project Proposal

A Secure Home for Orphans and the Family

Submitted to: Brother Brooke

Submitted by: Mei Kor
Yae Thoe Village, Yangon, Myanmar

December 2025

Table of Contents

1. Acknowledgments
2. Project Summary
3. Introduction
4. Ministry Background
5. Ministry Activities
 - 5.1 Church Planting
 - 5.2 Outreach Ministry
 - 5.3 Children Ministry
 - 5.4 Literature Distribution
 - 5.5 Sunday School
6. Our Current Situation
 - 6.1 Relocation to Open-Field Site
 - 6.2 Current Living Situation
7. Challenges
 - 7.1 Ministry Challenges
 - 7.2 Health Challenges
 - 7.3 Need for a Secure Home
8. Project Description
 - 8.1 Project Plan Proposal (1)
 - 8.2 Project Plan Proposal (2)
9. Risk Management
10. Who will help Oversee the Construction
11. Prayer Request

1. Acknowledgments

Dear brother Brooke,

We are deeply grateful for your compassionate heart and your willingness to help us raise the funds to build a secure home for our precious children and our family. Your heart for us is a true blessing, has saved our health and will change our situation.

We thank the Lord for speaking to you about what we dearly need. We have been praying for a secure home for many years, many days without even missing a day or a night to pray this prayer. We have rented more than 7 houses in the past years. We have faced many distractions and problems compared to the past, as the bamboo home was unsecure, undefended, and uncovered from anything. The children used to play or argue among themselves, saying that if we have a home, I will play like this or sleep in which room with a bed. When I heard them saying that, I smiled at them, saying you really want a home.

Your support will provide us a safe and loving home where our children can grow, play, study, and find hope for a brighter future. You are helping to create a foundation of security and faith for our family, and most importantly, it will prevent all distractions from animals, floods, sickness, and skin disease.

We are profoundly honored to have you as our prayer warrior, a partnership friend, and a supporter for our mission, our children, and the family. May God bless you abundantly for your kindness and reward you greatly.

With heartfelt gratitude,
Mei's Family

2. Project Summary

First of all, thank you for your heart for us to have a secure home. It is what we never imagined would happen to us with our current situation. I kindly present the **two proposal plans** of the building: the proposal with **a two-storied home design** and **a one-story home design**. The two-storied home would be more comfortable for our ministry home, but it will require more budget. And the one-story home is the optional one that can minimize the budget, but it can only sustain the children and family and has not much space for more people for home service or any programs. As our situation is attacked by many kinds of distractions such as floods, animals, and humidity that frequently lead to an unhealthy situation for us, a secure home, which we have been asking from the Lord for a long time, would significantly make our living situation better. This project will save us from all risks and solve any distracting environment and lead us peacefully to engage in the mission to reach the surrounding unreached, provide security for our children, and foster spiritual growth through Bible studies and prayer meetings with fellow believers.

3. Introduction

We are dedicated to sharing the gospel, caring for our precious children, and engaging in some mission activities, even on a small scale and by any possible means. It is indeed and honestly very hard to operate the ministry in a nation marked by economic hardship, political instability, and environmental challenges. We strive to offer hope through faith-based ministry and now focus more on the family ministry. Since early January 2025, we have been through many obstacles due to the political risks in our country. After urgently relocating to a suburban area where we now reside, we prayed to resume the work slowly, but a sudden trial hit us hard with a critical health issue for my daughter Hannah, including some sickness among my kids due to our poor living situation. We pray that if we have a new home, it will save us from mental distractions, physical issues, and all disasters. We also aim for this to be a venue for worship and a base for outreach activities such as Christmas programs, children's activities, and Bible studies. I would like to share the background of our ministry, our activities, and our current situation.

4. Ministry Background

The Lord called me when I was studying in high school, class 10, then I joined the Bible school in 2009. I entered the ministry in 2014 as a church clerk cum Sunday school teacher, and after pursuing further study in 2018, I became an assistant pastor. The Lord later gave me a heart to care for the orphans and the ministry, and I am faith-based, inspired by Rev. 21:6, where I should share the water of life with anyone who is thirsty. "I am Alpha and Omega, the beginning and the end. I will give unto him that is athirst of the fountain of the water of life freely." As I am self-

supporting through translation, I can engage in more activities when I am blessed with more projects. I saved the offerings for outreach programs and traveled to preach in other churches.

I was born in Chin State, where the majority are Christians. My community received Christ in 1994, and now we all are Christians. Back in 2009, Bible schools were available only in Yangon. When I was in the Bible school, as a requirement for the practical class, we shared about Christ with unbelievers every Saturday. I found that most of the people here had not even heard about Christ and prayed to dedicate myself to reach them. I resided here no matter what obstacles came our way. I rented many houses from one place to another, as sometimes we were not permitted to have services at a Buddhist family's home. When I left a place, the members were unable to follow me to a new location where rental space was available.

5. Ministry Activities

We actually operated through five core pillars in the past, each designed to advance the gospel, but due to many challenges this year, we have stopped many activities and can now mainly focus on the children's ministry with our kids and church planting as a home church service.

5.1 Church Planting

We have had a home church service at home for some years. Due to unstable rentals, we moved from one place to another. We restarted worship programs in underserved areas, particularly in suburban and rural regions where access to churches is limited, in the site where we reside now. Many of our members could not come to us because it required taking a bus or hiring a bike to get to us. When we have special occasions, we invite people who can join us.

When we had to relocate to the open field, there was much resistance from the local community to evangelizing compared to other regions. They were hard to tell about Christ, as they have been rooted in Buddhism since their forefathers. If someone converted to Christianity, we could be chased out of the village. As Jesus told His disciples, "I send you out as sheep in the midst of wolves; so be wise as serpents and innocent as doves," we first make friends, fellowship, and engage in community work. We were even reported to the military when we first settled in this village. When they heard that we were having Sunday service at home, military soldiers came two days later at midnight after Sunday; our home was surrounded by soldiers with guns, but the Lord protected us.

Our gathering at home is rooted in prayer and devotion. We have service on Sunday from 9:30 a.m. to 11:30 a.m., and night devotion with Bible reading from one chapter every night with the children. We also have Friday prayer meetings and sometimes fellowship with other believers.

5.2 Outreach Ministry

Our outreach efforts focus on creating and distributing evangelistic materials. Sharing gospel tracts is the easiest way we can reach unbelievers; we consider it indirect preaching. I carry gospel tracts everywhere, and when there is a chance, I hand out the tracts whether on the street, in hospitals, marketplaces, or on the bus.

We provided 48+ Myanmar Bible Audio Players for the illiterate, blind, and elderly, ensuring accessibility to God's Word for them. My parents are illiterate too, and I know how it feels to be willing to listen to God's Word. Many have reported to me how they have been blessed. We have door-to-door evangelism, small Bible seminars, children's outreach, and provide groceries to families when the Lord permits.

We held a Christmas outreach in a purely Buddhist village last December, after taking permission from the local authority, providing food and preaching about Christ the Savior born. The Christmas season is the best month in which we can engage in more outreach programs without many hindrances, since everyone notices Christians celebrating Christmas. Myanmar has some restrictions on openly sharing evangelism, but during the Christmas season, we can openly tell about Christ even with a large sound box.

5.3 Children Ministry

The children's ministry prioritizes orphans, guiding them toward spiritual growth and educational opportunities. By providing shelter, school support, and faith-based mentorship, we aim to secure their futures and their salvation. We currently have four orphans with us, and we are praying to have ten children in the future.

Myanmar is an underdeveloped country where many children lack education. Instead of going to school, we find most kids on the streets collecting bottles or beer cans thrown on the road to provide for their daily living. It is very hard to see orphans suffering more than anyone else. They sometimes are not treated as human and are made to work beyond what they should at their ages.

Though this ministry is challenging and requires monthly support regularly, it is worth providing from what we have to secure their lives. Most of the time, we face many challenging moments, wondering how we should feed them or provide for their school needs, as we sometimes have nothing at home. Sitting alone on a chair, whispering to God, "Lord, make this time something for us," and watching the children jump, play, and enjoy themselves around the home, not knowing what I am literally going through, is sometimes encouraging to me, and I praise God in the midst of all situations.

5.4 Literature Distribution

Our literature program produces and supplies resources like gospel tracts and Bibles. The literature ministry is another way of supporting our ministry through paid translation. I translate gospel tracts or write original scripts, printing 2,000 copies per batch to share on the street, in marketplaces, and individually for door-to-door evangelism. We also distribute them to churches across Myanmar and to individuals. I have translated four topics of tracts in 2024: **1. How to be Saved, 2. The Passport to Heaven, 3. Which Way Should I Take, and 4. The Savior is Born.** We have printed 8,000 copies and purchased 5,000 copies, distributing a total of 13,000 tracts in 2024. Additionally, we also distribute more than 45 Myanmar Bibles to those who cannot afford them. I am still praying to work on one topic of tract this year, 2025, but we cannot resume the work due to many ongoing obstacles and challenges.

5.5 Sunday School

I was born in a small village where there was no Sunday School class. Though my parents became Christians, I literally did not receive Christ at a young age, but came to faith in adult life. In village life, children mostly make noise; playing during service seemed distracting, so we were told to be outside during service about 35 years ago. We did not have a biblical foundation to build the fear of God. With that compassion and mindset, I have had a long desire to share Sunday School notes and lessons with local churches across Myanmar where Sunday School classes are lacking.

I have supplied over 25 local churches across Myanmar in 2024. The curriculum was purchased from the Bible Society of Myanmar, but my dream is to work on our own copyrighted lessons. There are some difficulties in using someone else's notes to distribute, and the lessons are not suitable for village learners. I have received some good feedback, but I have not been in a position to supply them since late 2024.

Until we can produce our own lessons, we will pause or stop the Sunday School ministry and pray to work with other Sunday School ministries, translating notes from them and adjusting them to our context to make them easy to understand for village learners.

I would like to provide some pictures of the ministry activities.

Church Programs



Mini Bible seminar



Church fellowship



Current service



Church fellowship

Outreach Programs



2023



2024





Children



Literature Programs



Sunday School





6. Our Current Situation

Since the 2021 military coup, Myanmar has faced political instability, economic decline, and increased poverty. Inflation rates have soared, with basic goods becoming unaffordable for many. Unemployment is high, particularly in rural areas, and infrastructure challenges limit access to education and healthcare. After the military coup, many companies left Myanmar, which increased unemployment. Poverty has led some people to commit crimes such as robbery, kidnapping, and even killing for small gain, making it unsafe to go outside after 8 p.m. Grocery prices are higher. For instance, to purchase cooking oil, we need permission from the local authority and must record it in a purchase book. A pack of coffee was 100 Ks before, but now it costs 1,200 Ks. After the conscription law was imposed in 2024, restrictions on gatherings were enforced, and our former rental place became high risk for us. Therefore, we sought a lower-risk location and currently settle near the open-field site.

6.1 Relocation to Open-Field Site

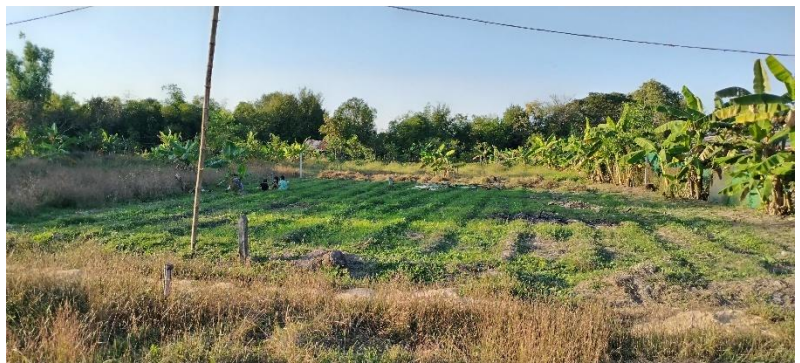
We lived near a town where things were accessible in a rented house before. We live with the four orphans and hold services with a few members. After the military coup, our living situation became difficult. We rented a house, and our ministry is home-based, but depression increased under military rule.

After the military imposed a conscription law stating that all males between 18–35 years old (eligible up to 45 years old) should join the military, we felt more pressure. Many military pensioners live in our rented area. We are required to report how many people live at home to the military-appointed village administration every ten days and pay 1,000 Ks each time. On January 10, 2025, the military in our village announced that all households must keep a copy of the members living at home. That midnight, when they came, some young men from our neighbors were taken by force, and even some parents died from shock. We are not allowed to

gather more than five people and are prohibited from discussing any matter while standing in the street.

When we learned all the risks of living there, we rapidly tried to move to another place. We looked for a rental home with possibly lower risk as soon as possible, but we could not find one where we all, including the orphans, could live together. During that time, I found a landlord who offered his land at a lower cost compared to others. We considered it the most reasonable option. Since we had no other place where we could settle safely, and our current rented area had become more risky, we started praying to move to that land with a loan.

Cleaning the Site to building the home



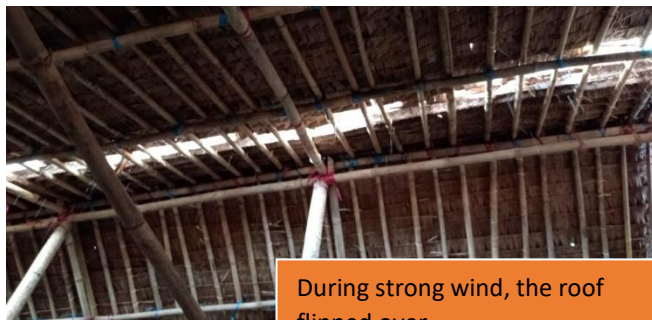


Lunch time.

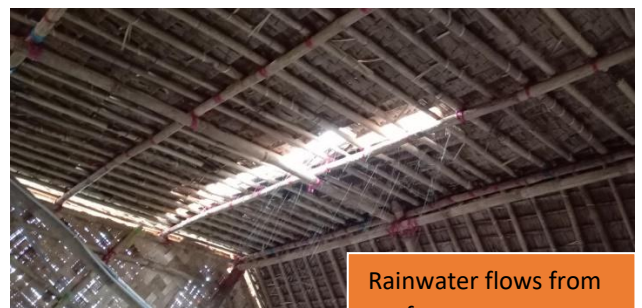




Leaking roof



During strong wind, the roof flipped over.



Rainwater flows from roof



Flood at home.



Flood at home.



Repairing the roof



Home at back





6.2 Current Living Situation

When we moved to an open field, we built a home with bamboo and have home services along with the four orphans and those who are able to join us—just a few believers. There are some major issues we encounter while living in an urban village in an open field:

6.2.1 The Heat – As it is an open field with no trees or buildings surrounding us, the heat is intense. It reaches 40°C at noon during summer, and we frequently get sick from heatstroke. Our home building doesn't block the sun from hitting directly.

6.2.2 The Animals – We experience issues with animals in all seasons.

- a. **The Insects** – As the house was built with bamboo, many kinds of insects enter, and we cannot block them. Our skin becomes itchy, and we sometimes need to visit the clinic for medication. During summer, insects enter the home at night from the open field, attracted by the light bulbs. They are itchy and leave some liquid on the skin.
- b. **The Frogs** – Our current home attracts many frogs during the rainy season. They surround us and make noise at night. From big to small, they enter the house at midnight. We cannot chase them out, and they are quite dirty. Our home is lower than the ground after we filled up the compound, so many kinds of frogs can enter easily. After 7 p.m., they start coming into the home, and when we wake up at midnight, we are sometimes frightened because we step on them. The worst thing is they get into our dishes and water filter. We tried to drink water but found a small frog in it, so we first need to clean it. They come into the home at night because many insects and worms are present that they come to catch. The most frustrating animals are the frogs.
- c. **The Flies** – There are many flies at home, especially during the rainy season, as the home has a humid atmosphere. Thousands of flies are killed every day. They also die in our food, curry, and other edible items. Imagine trying to drink soup and finding a dead fly in it.
- d. **Scorpions** – We have found scorpions on our carpet and in corners, but we have not been bitten yet, and we praise the Lord for protection.
- e. **Snakes** – The most common animals in our compound are snakes, both big and small. We kill almost 2–3 snakes per week. My young man, Ken, is good at killing them and then burying them in the ground. We also thank the Lord that none have entered the home or bitten anyone.
- f. **Caterpillar worms** – When we touch these worms, they infect our skin, leaving a painful liquid. I personally suffered from it for 2 weeks on my face between my eyes.
- g. **Centipedes** – These also appear when the home is humid. They live under the carpet or inside the ground.
- h. **Ants** – Ants are another frustrating animal we encounter at home. They are in our bed, our clothes, our food, and every corner on the walls. They are very painful when they bite, and when they bite Hannah, her skin becomes red and scarred for many days.
- i. **Rats** – The rats are very smelly, especially at night. Big rats come inside at night, but we cannot catch them all. We make traps to catch them every night. As we are surrounded by open fields where people farm, and the farms are flooded, the rats seek dry places to settle and make holes in every corner of the home underground. They make the environment dirty and produce unbearable smells.
- j. **Others** – There are also grasshoppers, beetles, crickets, cockroaches, praying mantises, and moths.

6.2.3 The Monsoon Atmosphere – During the rainy season, we encounter many problems that sometimes lead to health issues.

- a. **The Flood** – When it rains heavily, our home is surrounded by floodwater. The ground becomes dirty. The humid situation sometimes leads to respiratory problems such as coughing, fever, or sneezing. Our kids experience this problem frequently, but the worst is for Hannah, and we recently admitted her to the hospital for her respiratory issue. Hannah experiences catarrh all the time, which often causes her nose to be blocked and unable to breathe. Therefore, we also have to keep a nasal drop called *Physiodose*.
- b. **Humidity** – When we checked under the carpet, there was water inside, and the floor seemed to be wet. If we lay down directly on the floor, our body starts to ache, and the muscles seem to hurt. This leads to an unhealthy situation for the children because we sleep on the floor.
- c. **Roof Leaking** – As our home is built with bamboo and the roof was covered with palm leaves, birds liked to stay inside or make their nests from the palm. They made holes in the roof, and it always needed repair. After some months of the rainy season, the palms slowly decayed, and it began leaking. We experienced rain dripping when it was windy or heavily raining. We no longer have this problem after we repaired it with iron sheets.
- d. **Muddy at home** – As we live with children, whenever they go outside, they make the home muddy and dirty.

6.2.4 The Airplane/Airstrike Port – When we purchased or planned to purchase the land, we heard nothing about airplanes flying over us. But after we moved, the military airstrikes started flying very close overhead. The flying sound is unbearable. Deborah and baby Hannah cannot sleep and are frightened whenever the planes fly. We heard the news that the military relocated the airstrike port near our village, and our bamboo home doesn't block any sound from outside.

7. Challenges

We face some significant obstacles this year more than ever before, and as the current conflict situation has increased, it has added more struggles. Our position to proceed with outreach activities also faces many challenges.

7.1 Ministry Challenges

Until 2024, we were somehow involved in ministry activities and outreach programs. However, our funding shortages restrict the scale of outreach, such as printing additional tracts or expanding Bible/audio distributions. We also face logistical barriers, including poor transportation networks, which complicate the delivery of resources to remote areas.

7.1.1 How We Raise Funds for the Ministry

I worked in media companies as a Burmese translator and content writer from 2018 to 2020 until the global pandemic broke out. After the 2021 military coup and the declaration of the state of emergency, all the companies left the country due to security concerns.

The Lord has been leading us through the small payments from translation work that we manage for both our family and ministry activities. The scope of our outreach has become smaller, and we had to stop some of our ministries. We later experienced health issues that further challenged us in 2025. Therefore, we are now focusing mainly on home services and caring for the children in 2025.

7.2 Health Challenges

The Lord blessed us with a beautiful baby on May 4, 2025. As we rejoiced that one member was added to the family, within the next 24 hours, her seizures started, and we were transferred to a larger children's hospital. She was kept in the NICU with uncertainty for a month. Even after we were discharged, we were required to admit her to the hospital frequently, and the many check-ups and trip expenses were beyond our means.

Our children also sometimes have flu, fever, and cough. The monsoon season increases sickness among us, as our living condition seems to invite these issues. With the Lord's protection, He has taken care of us amid every situation until today.

7.3 Need for a Secure Home

Our current bamboo house in the open field will become even more unsafe and unhealthy in the coming seasons, as we see the foundations and bamboo pillars slowly rotting. Dust from the ground comes into the house beneath the floor. During the summer, the heat rises above 40°C in Myanmar, and with no trees or shade, the house becomes extremely hot. We often suffer from headaches and heat exhaustion. In the rainy season, the compound is surrounded by floodwater, and the damp floor creates a muddy and dirty environment.

We also face constant trouble from animals like worms, snakes, frogs, rats, and insects that enter the house day and night. Their bites are painful, and the dirt they bring makes the home unpleasant and difficult to keep clean. At noon, the noise of low-flying aircraft frightens the children.

These living conditions are beyond what we can endure for long. The bamboo walls cannot protect us from heat, floods, animals, or noise. We need a secure home built with strong materials, where our children can live safely, sleep peacefully, and grow in a clean and healthy environment. A stable home will not only shelter us but also give us hope and strength to continue caring for the children faithfully and to carry out our mission with greater reach and peace of mind.



8. Project Description

I would like to kindly present the **two proposals** for home construction plans, so that we might work on the possible plans according to our budget. If I have a chance to share our vision home for the long-term plan, we prefer a two-storied house where the family and girls could live on the ground floor, while the boys, personal prayer room, or library would be on the upper floor, along with a hall-type area for church worship services on Sundays or for any outreach programs.

8.1 Proposal Project Plan (1)

The Project Plan (1) is a two-storied home design, which will accommodate many facilities. As we have prayed to grow more in the future, this plan will greatly impact our future goals for gatherings or any activities.

Architectural Design and Specifications

The design prioritizes durability, climate resilience, and cost-effectiveness, using locally sourced materials such as brick, concrete, and the structure with steel.

Building Type:

Two-storied reinforced concrete house

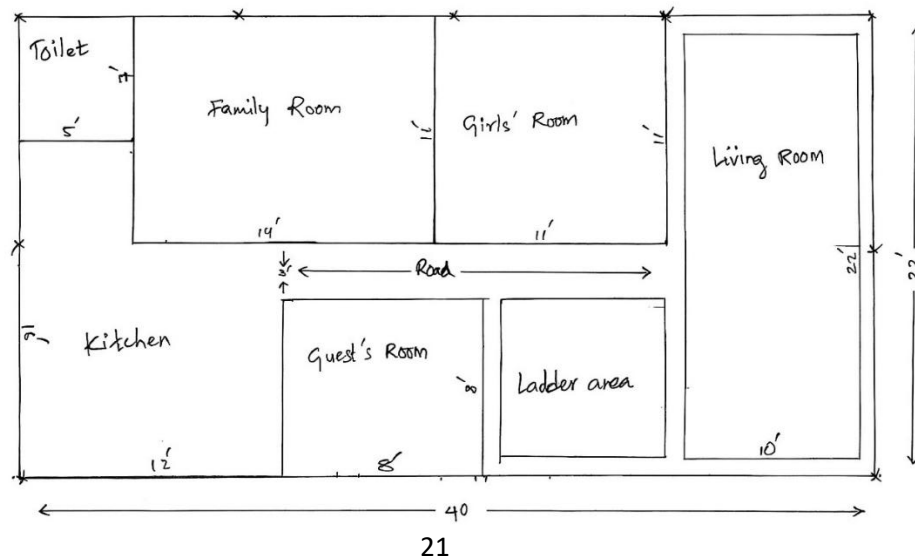
Size:

40 feet (length) × 22 feet (width)



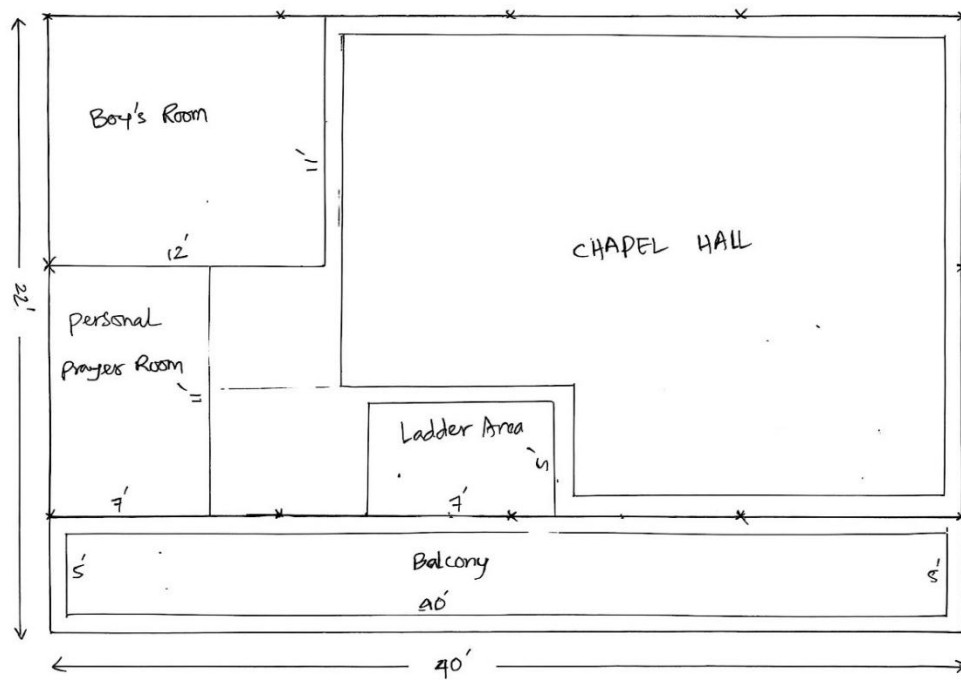
Ground Floor sample

1, Ground Floor





2. upper Floor



Ground Floor Plan (Residential for Family and the Girls)

The ground floor is designed for a private family room and the girls' room, the living room, the kitchen, and a toilet.

Room	Requested Dimension	Primary Function
Family Room	14'×11'	The family private room
Girls' Room	11'×11'	Private room for girls
Living Room	22'× 10'	Main entry and reception area.
Guest's Room	8'×8'	The guests or members could stay
Toilet	7'×5'	Required for health and sanitation.
Kitchen	16'×12	Designed for communal meal preparation.

Upper Floor (Worship and Boy's Accommodation)

The upper floor is dedicated primarily to the ministry's public function, including the worship hall space, the boys' private room for sleeping, and a personal prayer room. It will also include a balcony.

Room	Requested Dimension	Primary Function
Boy's Room	12'×11'	Private room for boys.
Church Hall for Worship	Flexible	A multi-purpose space for prayer meetings, Sunday School, outreach events and Sunday worship service.
Personal Prayer room	11'×7'	Personal prayer room and library especially for MEI.
Balcony	40'×5	A small area to sit, enjoy the view for children.

Materials and Structure

- Steel Structure
- Brick and cement plastered walls
- Iron sheet roofing with gutters
- Ceramic-tiled flooring for easy maintenance
- Wooden doors and aluminum windows with mosquito nets
- Proper electrical wiring and plumbing
- Septic tank and rainwater collection system for sustainability

Estimated Budget

Below is a detailed breakdown based on 2025, market rates in Myanmar (Two Storied Building).

No.	Category	Qty	Unit Price in MMK	Total Cost	
				MMK	GBP
1.	Brick	32,000	290.00	9,280,000.00	£ 1,874.75
2.	Cement	400	25,000.00	10,000,000.00	£ 2,020.20
3.	Gravel	15	250,000.00	3,750,000.00	£ 757.58
4.	Sand	35	90,000.00	3,150,000.00	£ 636.36
5.	Iron (I design- 40', size = 5"x 2.5")	16	350,000.00	5,600,000.00	£ 1,131.31
6.	Iron (size = 4"x 2")	15	150,000.00	2,250,000.00	£ 454.55
7.	Iron (size = 3"x 1.5")	25	80,000.00	2,000,000.00	£ 404.04
8.	Iron (size = 1.5"x 1.5")	40	35,000.00	1,400,000.00	£ 282.83
9.	Iron Nails (5 mm)	1.5 tons	180,000.00	270,000.00	£ 54.55
10.	Nails (6 mm)	1 ton	190,000.00	190,000.00	£ 38.38
11.	Steel Plate Sheet	320	12,000.00	3,840,000.00	£ 775.76
12.	Coil (5/8 inch)	3	220,000.00	660,000.00	£ 133.33
13.	Coil (3/4 inch)	4	200,000.00	800,000.00	£ 161.62
14.	Angle Bar (L Design)	15	48,000.00	720,000.00	£ 145.45
15.	Binding Wire	15	40,000.00	600,000.00	£ 121.21
16.	Welding Cutting Disc	Lump sum	500,000.00	500,000.00	£ 101.01
17.	Iron Sheets (600')	600	4,800.00	2,880,000.00	£ 581.82
18.	Window (Frame+Sash+Handle+Hinge)	21	300,000.00	6,300,000.00	£ 1,272.73
19.	Door (Frame+wood slap+materials)	9	710,000.00	6,390,000.00	£ 1,290.91
20.	Wiring and Installation (1.2+1.5+ bulb)	Lump sum	6,276,000.00	6,276,000.00	£ 1,268.89
21.	Painting (Paint+Lime+Plaster+Thinner)	Lump sum	4,520,000.00	4,520,000.00	£ 913.13
22.	Ceramic Tile + Tile Grout + Tile Glue	Lump sum	8,900,000.00	8,900,000.00	£ 1,797.98
23.	Ceiling (Gypsum Boards+Frame+Joint)	10	170,000.00	1,700,000.00	£ 343.43
24.	Construction Labor Cost	Lump sum	30,000,000.00	30,000,000.00	£ 6,060.61
25.	Transportation	Lump sum	3,000,000.00	3,000,000.00	£ 606.06
26.	Permits & Inspections (YCDC fees)	Lump sum	500,000.00	500,000.00	£ 101.01
27.	Ground Fill up with earth	7 vehicles	60,000	420,000.00	£ 84.85
28.	Miscellaneous (PVC, toilet, trowels, shovels, gutters, etc..)	Lump sum	4,500,000.00	4,500,000.00	£ 909.09
Grand Total				120,396,000.00	
					£ 24,322.42

* It is calculated £1 = 4,950 MMK as current market exchange rate.

* The estimate cost and materials are calculated and provided by local engineers.

Proposal Overview and Impact

If we can build a two storied building, it will provide us:

- Larger space and accommodation for the family and orphans
- Myanmar has a tradition of having guests, our guest would have a room.
- The boys sleeping on upper floor will avoid unwanted temptations instead of living same floor with the girls.
- Free space for worship services, more people could come if we grow in the future.
- Mei Kor will have personal space for prayer, and a library.
- The space on our land could fits well with the size of the building.

8.2 Proposal Project Plan (2)

The Project Plan (2) is a one-story home design that can accommodate only the children and our family. While it helps **reduce the budget**, it also limits space for future growth. As our family and ministry pray to grow, this design will not have enough room for additional children or visitors. Therefore, a one-story home would help only the family and children for now, and its long-term stability would have slight weaknesses.

Architectural Design and Specifications

The design prioritizes durability, climate resilience, and cost-effectiveness, using locally sourced materials such as brick, concrete, and the structure with steel.

Building Type:

One story reinforced concrete house

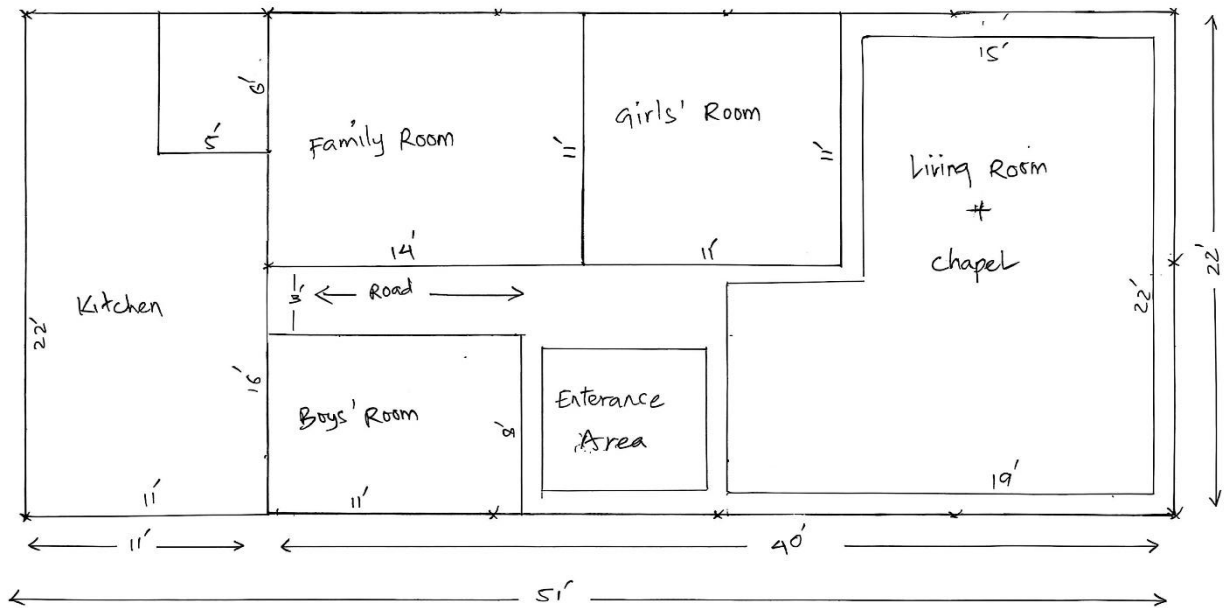
Size:

51 feet (length) × 22 feet (width)



One story home sample

one story Home



Home Plan (Residential for the Children and the Family)

The one-floor home plan is designed for everyone, including the children and the family. The living room will also serve as a sleeping area for guests and for home services, and the kitchen includes a toilet.

Room	Requested Dimension	Primary Function
Family Room	14'×11'	The family private room
Girls' Room	11'×11'	Private room for girls
Boys' Room	11'× 8'	Private room for boys.
Living Room	15'×22'×19'	Main entry and reception area.
Toilet	6'×5'	Required for health and sanitation.
Kitchen	6'×11'×22	Designed for communal meal preparation.

Materials and Structure

- Steel Structure
- Brick and cement plastered walls
- Iron sheet roofing with gutters
- Ceramic-tiled flooring for easy maintenance
- Wooden doors and aluminum windows with mosquito nets
- Proper electrical wiring and plumbing
- Septic tank and rainwater collection system for sustainability

Proposal Overview and Impact

If we build a one-story building, it will have the following slight **weaknesses**:

- The Living Room will serve as a worship hall for maximum of 25-30 people sitting on the floor.
- Guest will NOT have sleeping room.
- The boys and the girls will share the same floor in the long run.
- The boys' room would be SMALLER.
- Mei Kor will NOT have personal space for prayer, and a library.
- There will NOT be a balcony.
- The space on our land could be very tight with the size of the building (51 feet).
- **Advantages:** - The Family and girls will have the same-sized rooms.
 - The construction cost would be smaller.

Estimated Budget

Below is a detailed breakdown based on 2025 market rates in Myanmar (one story building).

No.	Category	Qty	Unit Price in MMK	Total Cost	
				MMK	GBP
1.	Brick	22,000	290.00	6,380,000.00	£ 1,288.89
2.	Cement	300	25,000.00	7,500,000.00	£ 1,515.15
3.	Gravel	11	250,000.00	2,750,000.00	£ 555.56
4.	Sand	25	90,000.00	2,250,000.00	£ 454.55
5.	Iron (I design- 40', size = 5"x 2.5")	16	350,000.00	5,600,000.00	£ 1,131.31
6.	Iron (size = 4"x 2")	15	150,000.00	2,250,000.00	£ 454.55
7.	Iron Nails (5 mm)	1 ton	180,000.00	180,000.00	£ 36.36
8.	Nails (6 mm)	1 ton	190,000.00	190,000.00	£ 38.38
9.	Steel Plate Sheet	200	12,000.00	2,400,000.00	£ 484.85
10.	Coil (5/8 inch)	2	220,000.00	440,000.00	£ 88.89
11.	Coil (3/4 inch)	2	200,000.00	400,000.00	£ 80.81
12.	Angle Bar (L Design)	15	48,000.00	720,000.00	£ 145.45
13.	Binding Wire	12	40,000.00	480,000.00	£ 96.97
14.	Welding Cutting Disc	Lump sum	500,000.00	500,000.00	£ 101.01
15.	Iron Sheets (600')	600	4,800.00	2,880,000.00	£ 581.82
16.	Window (Frame+Sash+Handle+Hinge)	10	300,000.00	3,000,000.00	£ 606.06
17.	Door (Frame+wood slap+materials)	7	710,000.00	4,970,000.00	£ 1,003.03
18.	Wiring and Installation (1.2+1.5+ bulb)	Lump sum	4,526,000.00	4,526,000.00	£ 914.34
19.	Painting (Paint+Lime+Plaster+Thinner)	Lump sum	2,850,000.00	2,850,000.00	£ 575.76
20.	Ceramic Tile + Tile Grout + Tile Glue	Lump sum	5,300,000.00	5,300,000.00	£ 1,070.71
21.	Ceiling (Gypsum Boards+Frame+Joint)	5	170,000.00	850,000.00	£ 171.72
22.	Construction Labor Cost	Lump sum	20,000,000.00	20,000,000.00	£ 4,040.40
23.	Transportation	Lump sum	2,300,000.00	2,300,000.00	£ 464.65
24.	Permits & Inspections (YCDC fees)	Lump sum	250,000.00	250,000.00	£ 50.51
25.	Ground Fill up with earth	7 vehicles	60,000	420,000.00	£ 84.85
26.	Miscellaneous (PVC, toilet, trowels, shovels, gutters, etc..)	Lump sum	3,300,000.00	3,300,000.00	£ 666.67
Grand Total				82,686,000.00	
					£ 18,198.08

* It is calculated £1 = 4,950 MMK as current market exchange rate.

* The estimate cost and materials are calculated and provided by local engineers.

* The foundation, roof, and other materials would be the same, mainly reduce on painting, ceramic etc..

9. Risk Management

To ensure project success, I have identified potential risks and mitigation strategies:

Risk	Likelihood	Impact	Mitigation
Monsoon Delays	High	Medium	Schedule construction during dry season (Nov-May); use weather-resistant materials.
Material Cost Increases	Medium	High	Secure bulk purchases early; include 15% contingency in budget.
Permit Delays	Medium	Medium	Engage YCDC early; hire local consultant for compliance.

*Once we lay the foundation, we can continue construction even during the monsoon or any season. The foundation in the ground plays a vital role in ensuring firmness, security, and durability.

* Winter or Summer season is the best for the construction.

* But there is small bridge if we broke at monsoon, we should repair that would cost about \$1,000.

10. Who will Help Oversee the Construction



Mon Kyin, Rev. Thein Aung, Mei Kor, So Law

I have ministry advisors who will help me oversee the construction. Rev. Thein Aung is the main advisor and assists me with all plans and outreach programs. With him, we built the current bamboo home in January.

The construction plan and estimate have been confirmed by Rev. Thein Aung. (The picture is when we held a Feeding Outreach in August 2024.)

Rev. Thein Aung (Senior Pastor of Jesus Christ Baptist Church), Mon Kyin (Evangelist of All Nations Prayer Church), and So Law (Bible student and my former co-worker until 2024 as outreach leader, now pursuing his M.Div).

11. Prayer Request

The construction of a two-storied home would be a pivotal step toward sustaining our family and ministry for the children, now and into the future. It will create sufficient space for all the children, our family, even guests, a prayer room, and more space for worship service. While a one-story home could meet basic needs and reduce the budget, it would limit space for the children, guests, and ministry activities, making it less suitable for long-term growth.

A strong brick home will certainly provide a safe, secure, and healthy environment, protecting the children and the family from heat, floods, insects, and other dangers. Meanwhile, our current bamboo home exposes us to constant risks such as floods, extreme heat, insects, many kinds of animals, and other challenges that make daily life difficult and unsafe.

With a strong and durable structure, this home will meet our immediate needs and ensure long-term stability, reducing future repairs or expansions. Your support will turn this vision into reality, giving the children a secure place to thrive, enabling our family to care for them effectively, and providing a foundation from which our ministry can grow. This brick home will be more than a shelter; it is a vital investment in safety, hope, and the future of the children and our mission.

In His Service,
Mei Kor
Yangon, Myanmar

For every house has a builder, but the one who built everything is God._ Hebrew 3:4